

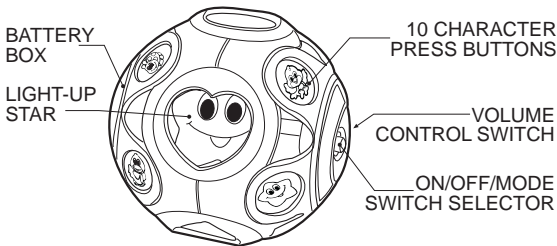
*Dear Parent:*

*At VTech® we know that a child has the ability to do great things. That's why all of our electronic learning products are uniquely designed to develop a child's mind and allow them to learn to the best of their ability. Whether it's introducing numbers and letters, identifying colors and shapes, or stimulating senses with lights and music, all VTech® infant and toddler learning products encourage your child's natural growth and discovery skills. When it comes to providing electronic learning products that enlighten, entertain and develop minds, at VTech® we see the potential in every child.*

# INTRODUCTION

Thank you for purchasing the **VTech® Peek-A-Boo Ball™**! We at **VTech®** are committed to providing the best possible products to entertain and educate your child. Should you have any questions or concerns, please call our Consumer Services Department at 1-800-521-2010 in the U.S. or 1-800-267-7377 in Canada.

The **VTech® Peek-A-Boo Ball™** learning toy is a colorful light-up ball designed for toddlers aged 6 months and up. The spinning star, flashing lights, funny sound effects, and 10 built-in melodies will stimulate baby's senses. Baby will roll into fun with the **VTech® Peek-A-Boo Ball™**.



## INCLUDED IN THIS PACKAGE

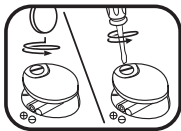
- One **VTech® Peek-A-Boo Ball™** learning toy
- One instruction manual

**WARNING: All packing materials, such as tape, plastic sheets, wire ties and tags are not part of this toy, and should be discarded for your child's safety.**

For information on this products warranty, please call VTech at 1-800-521-2010 in the U.S. or 1-800-267-7377 in Canada.

# BATTERY INSTALLATION

1. Make sure the unit is turned **OFF**.
2. Locate the battery cover on the bottom of the unit. Use a coin or screwdriver to loosen the screw.
3. Install 2 new “AA” (UM-3/LR6) batteries following the diagram inside the battery box. (The use of new alkaline batteries is recommended for maximum performance.)
4. Replace the battery cover and tighten the screw to secure the battery cover.



## BATTERY NOTICE

- Install batteries correctly observing the polarity ( + , - ) signs to avoid leakage.
- Do not mix old and new batteries.
- Do not use batteries of different types.
- Remove exhausted or new batteries from the equipment when the unit will not be used for an extended period of time.
- Do not dispose of batteries in fire.
- Do not attempt to recharge ordinary batteries.
- The supply terminals are not to be short-circuited.
- Only batteries of the same and equivalent type as recommended are to be used.

## WE DO NOT RECOMMEND THE USE OF RECHARGEABLE BATTERIES.

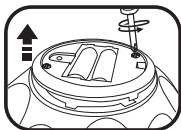
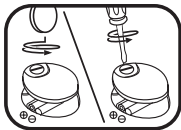
**NOTE:** If for some reason the program/activity stops working, please follow these steps:

1. Please turn the unit **OFF**.
2. Interrupt the power supply by removing the batteries.

3. Let the unit stand for a few minutes, then replace the batteries.
4. Turn the unit **ON**. The unit should now be ready to play again.



**REMARKS:** Please note that it is recommended to keep objects from being inserted into the ball. If an object is inserted through one of the openings of the ball, please follow these steps:

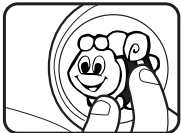
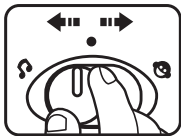
1. Make sure the unit is turned **OFF**.
2. Locate the battery box on the unit.
3. Use a screwdriver to loosen the screw on the battery box to take the battery box out of the ball.
4. Remove the object from the ball.



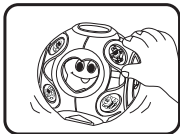
If the problem persists, please call our Consumer Services Department at 1-800-521-2010 in the U.S. or 1-800-267-7377 in Canada, and a service representative will be happy to help you.



## TO BEGIN PLAY

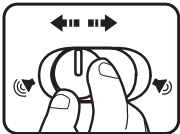
1. Slide the **ON/OFF/MODE SELECTOR SWITCH** to the **TALKING MODE** (  ) or **MUSIC MODE** (  ) position to turn the unit **ON**. You will be greeted with a short tune or a talking phrase. The **LIGHT-UP STAR** will flash with the sound.
2. Press one of the **CHARACTER BUTTONS** to begin play.



3. Roll or spin the ball to hear random melodies, funny sound effects, or short tunes. The **LIGHT-UP STAR** will flash with the sound.



4. To adjust the volume, slide the **VOLUME CONTROL SWITCH** to (  ) for **LOW VOLUME** or (  ) for **HIGH VOLUME**.




5. To turn the unit **OFF**, slide the **ON/OFF/MODE SELECTOR SWITCH** to the **OFF** ( ● ) position.

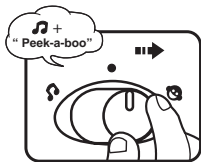


**NOTE:** To preserve battery life, the **VTech® Peek-A-Boo Ball™** learning toy will turn off automatically after a few minutes without input. The unit can be turned on again by pressing any button.

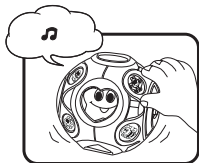
## ACTIVITIES

### A. Talking Mode


1. Slide the **ON/OFF/MODE SELECTOR SWITCH** to the **TALKING MODE** (  ). You will hear a short tune and “Peek-a-boo.” The **LIGHT-UP STAR** will flash with the sound.
2. Press one of the **CHARACTER BUTTONS** to hear a character identified, a funny sound effect, or a short tune. The **LIGHT-UP STAR** will flash with the sound.

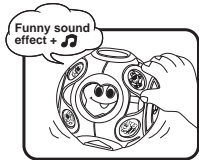
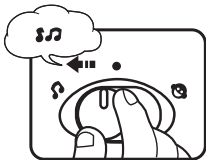


3. Roll or spin the ball to hear random melodies. Press one of the **CHARACTER BUTTONS** while a melody is playing to hear the voice or sound effect play over the melody. The **LIGHT-UP STAR** will flash with the sound.



## B. Melody Mode

1. Slide the **ON/OFF/MODE SELECTOR SWITCH** to the **MELODY MODE** (  ). A short tune will play. The **LIGHT-UP STAR** will flash with the sound.
2. Press the **CHARACTER BUTTONS** to hear melodies or funny sound effects playing along with the melodies. The **LIGHT-UP STAR** will flash with the sound.
3. Roll or spin the ball to hear a funny sound effect and a random short tune.



## Melodies:

- Mary Had a Little Lamb
- Alouette
- Polly Wolly Doodle
- Sing a Song of Sixpence
- Twinkle Twinkle Little Star
- Bingo
- Old MacDonald Had a Farm
- Ring Around the Rosie
- Pop! Goes the Weasel
- Are You Sleeping?

## CARE AND MAINTENANCE

1. Keep the unit clean by wiping it with a slightly damp cloth.
2. Keep the unit out of direct sunlight and away from any direct heat source.

3. Remove the batteries when the unit is not in use for an extended period of time.
4. Do not drop the unit on hard surfaces and do not expose the unit to moisture or water.

### **IMPORTANT NOTE**

Creating and developing infant/toddler products is accompanied by a responsibility that we at **VTech®** take very seriously. We make every effort to ensure the accuracy of the information, which forms the value of our products. However, errors sometimes can occur. It is important for you to know that we stand behind our products and encourage you to call our Consumer Services Department at 1-800-521-2010 in the U.S., or 1-800-267-7377 in Canada with any problems and/or suggestions that you might have. A service representative will be happy to help you.

### **Note:**

This equipment generates and uses radio frequency energy and if not installed and used properly, that is, in strict accordance with the manufacturer's instructions, it may cause interference to radio and television reception. It has been tested and found to comply within the limits for a Class B computing device in accordance with the specifications in Subpart J of Part 15 FCC Rules, which are designed to provide reasonable protection against such interference in a residential installation. However, there is no guarantee that interference will not occur in a particular installation. If this equipment does cause interference with radio or television reception, which can be determined by turning the equipment off and on, the user is encouraged to try to correct the interference by one or more of the following measures:

- reorient the receiving antenna
- relocate this product with respect to the receiver
- move this product away from the receiver